



AGArangeusa.com

# 20" CLASSIC HOTCUPBOARD WITH WARMING PLATE MODULE

MODEL: **AHC**  
MSRP: **\$5,389**



The AGA Hotcupboard with Warming Plate Module is an integrated solution providing additional cooking space with a simmering and warming oven. You'll have the ability to slow roast, slow cook, and keep food or plates warm prior to serving.

## OVERVIEW

The AGA Classic 20" Hotcupboard with Warming Plate is the original integrated solution giving owners two additional ovens for warming and simmering foods. This model boasts a large warming plate atop the hotcupboard giving additional serving space for buffet styled meals. This integrated solution attaches to the left of any 3-oven AGA Total Control or AGA Dual Control.

The Hotcupboard features the iconic AGA signature look with cast iron doors and cast iron front. The large 6 1/4"H x 14 1/8"W aluminum warming plate, perfect for keeping food warm prior to serving. Boasting both a Simmering oven and a Warming oven, the hotcupboard seamlessly integrates, giving the look of one large range. Want the ultimate AGA? Use the Integrated Module to create a 7-oven cooking experience!

## SPECIFICATIONS

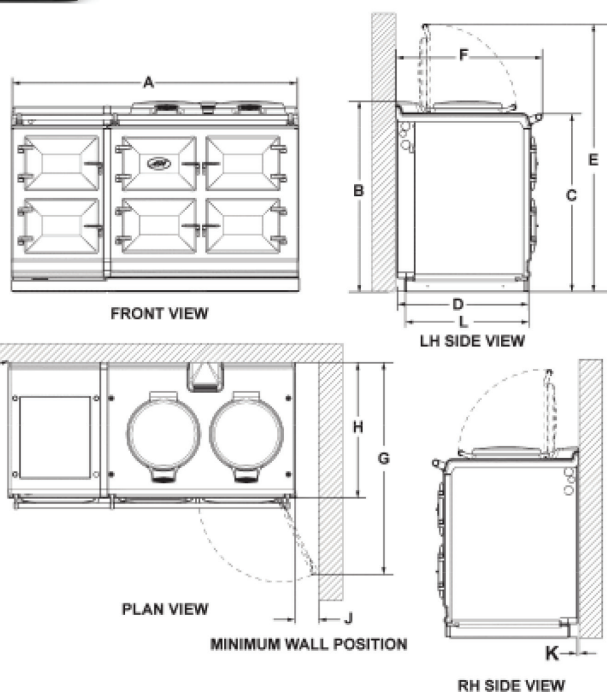
- Product Dimensions: 36" H x 19 3/8" W x 27 1/2" D
- Shipping weight (lbs): 332 lbs *(includes range, crate & pallet)*

## WARRANTY

- 1 Year Limited Warranty on all parts and labor

## FINISHES

- The AGA Classic is coated in hygienic, easy-to-clean vitreous enamel *(Due to the custom nature of this product, please allow a minimum of 110 to 140 days lead time from receipt of order)*



	A	B	C	D	E	F	G	H	J	K	L
mm	1478	951	913	680	1388	760	1145	698	116	10	634
ins	58 1/4	37 1/2	36	26 3/4	54 5/8	29 7/8	45 1/8	27 1/2	4 9/16	3/8	25





AGArangeusa.com

# 20" CLASSIC HOTCUPBOARD WITH WARMING PLATE MODULE



## FEATURES

- Iconic AGA signature look with cast iron doors, front and top.
- Large 16 ¾"H x 14 1/8"W aluminum warming plate, perfect for keeping food warm prior to serving.
- Simmering oven at the top of the hotcupboard is perfect for slow cooking meats.
- Warming oven at the bottom is perfect for keeping desserts warm while eating your meal. Warm your tableware prior to serving.
- Push button control to operate; hotcupboard operates separate from the 3-oven cast iron range and other integrated solutions.
- Seamless integration giving the look of one large range
- Includes one large handle to complete the integrated look

## CAST IRON BENEFITS

Acclaimed as one of the most perfect mediums for great cooking because it retains heat well, has even heat distribution and radiates a gentle heat aiding food in flavor retention and succulence.

Cast iron cooking means ease of cleaning because oven splashes and spills are carbonized and simply require wiping out. An AGA also means fewer intrusive cooking smells.

A large proportion of each cast iron AGA has been made from recycled material, and is almost completely recyclable.

**Must integrate with an AGA Total Control or Dual Control**

Specifications are subject to change without notice. Visit [agarangeusa.com](http://agarangeusa.com) for the most up-to-date information.



AGArangeusa.com

# 20" CLASSIC HOTCUPBOARD WITH WARMING PLATE MODULE



Technical Specifications	
Overall Dimensions	36"H x 19 <sup>3</sup> / <sub>8</sub> "W x 27 <sup>1</sup> / <sub>2</sub> "D
1. Warming Plate	16 <sup>1</sup> / <sub>2</sub> "H x 14 <sup>1</sup> / <sub>8</sub> "W
2. Simmering Oven	10"H x 13 <sup>3</sup> / <sub>4</sub> "W x 20 <sup>1</sup> / <sub>4</sub> "D
3. Warming Oven	10"H x 13 <sup>3</sup> / <sub>4</sub> "W x 20 <sup>1</sup> / <sub>4</sub> "D
Weight	292 lbs
Shipping Weight	332 lbs
Electrical Requirements	110v, 15amp, 60Hz
Fuel/Power	Electric
Warranty	1 Year Limited Warranty on all parts and labor
Shipping Instruction	Ships fully assembled in separate carton

**Must integrate with an AGA Total Control or Dual Control**

Specifications are subject to change without notice. Visit [agarangeusa.com](http://agarangeusa.com) for the most up-to-date information.