



AGArangeusa.com

24" CLASSIC DUAL FUEL MODULE

MODEL: **TCDCNGM**



Designed for those who love the benefits of cast-iron radiant heat cooking and wish to incorporate the joys of open flame and conventional ovens, the AGA Dual Fuel Module offers a gas hob and is available in natural gas and liquid propane (LPG).

OVERVIEW

The AGA Classic 24" Dual Fuel Module is designed for those who love the many benefits of their cast iron AGA range and wish to incorporate the joys of open flame and conventional ovens. This integrated solution attaches to any 3-oven AGA Total Control or 3-oven AGA Dual Control.

The Module features the iconic AGA signature look with cast iron doors and cast iron front. Boasting both a Conventional Slow Cook Oven with dual element Broiler and a Convection Oven with Fan, along with a Four-ring gas burner provides instant power and a rapid response for any type of cooking. LPG gas is also available.

Want the ultimate AGA? Use the Integrated Module to create a 7-oven cooking experience!

SPECIFICATIONS

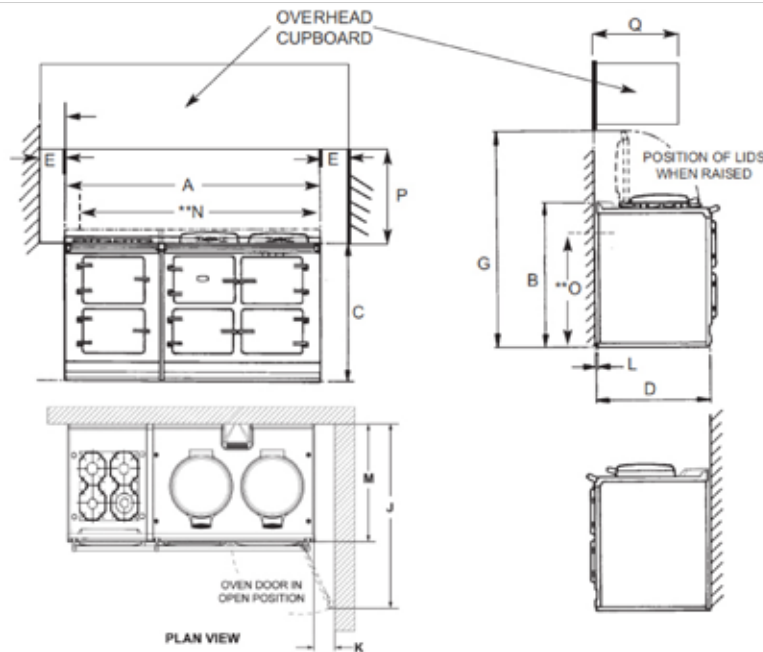
- Product Dimensions: 36" H x 23 ½" W x 27 ½" D
- Shipping weight (lbs): 393 lbs *(includes range, crate & pallet)*

WARRANTY

- 1 Year Warranty for parts and labor, subsequent 4 years - parts only

FINISHES

- The AGA Classic is coated in hygienic, easy-to-clean vitreous enamel *(Due to the custom nature of this product, please allow a minimum of 110 to 140 days lead time from receipt of order)*



	A	B	C	D	E	G	H	J	K	L	M	N	O	P	Q
mm	1589	948	910	679	75	1330	756	1125	116	3	698	1533	800	760	330
ins	62 5/16	37 1/16	35 1/4	26 3/4	3	51 1/4	29 3/4	44 1/4	4 1/2	1/8	27 1/2	60 1/2	31 1/2	30	13



OLIVINE



AUBERGINE



BLACK



CREAM



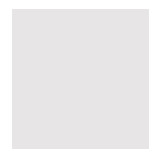
DARK BLUE



DUCK EGG BLUE



PEWTER



WHITE



PEARL ASHES



SLATE



SALCOMBE BLUE



LINEN



DOVE



DARTMOUTH BLUE



BLUSH



BRITISH RACING GREEN



AGArangeusa.com

24" CLASSIC DUAL FUEL MODULE



FEATURES

- Iconic AGA signature look with cast iron doors and cast iron front.
- Four-ring gas burner provides instant power and a rapid response for any type of cooking.
- The 4 gas burner range top features two 6,150 BTU, an 11,000 BTU and one 12,000 BTU gas burners – available in natural gas and liquid propane.
- Special oven linings - to save on cleaning time, the ovens have a specially developed lining which helps them keep themselves clean during cooking.
- Boasts a powerful two 4-pass Infrared

CAST IRON BENEFITS

Acclaimed as one of the most perfect mediums for great cooking because it retains heat well, has even heat distribution and radiates a gentle heat aiding food in flavor retention and succulence.

Cast iron cooking means ease of cleaning because oven splashes and spills are carbonized and simply require wiping out. An AGA also means fewer intrusive cooking smells.

A large proportion of each cast iron AGA has been made from recycled material.

INSTALLATION

Range Dimensions

When surveying for a range cooker installation the actual clearance required for the 'body' of the appliance should be increased overall by 3/8" (10mm) beyond the figures

quoted. This allows safe margin to take into account the natural dimensional variations found in major castings. In particular the width across an appliance recess could be critical.

Location

The side wall clearance above the hob shall be greater than 3". Surfaces over the top of the range must not be closer than 30" and must not exceed 13" in depth. The vent slots in the back of the top plate (or shroud) must not be obstructed. *Note: It is essential that the supply cable is routed away from any hot surfaces i.e. hot flue pipes. In the interests of safety, due consideration must be given to the protection of the electric cable to the Module/ Companion.*

The AGA TC/DC Integrated Dual Fuel Module requires a 30 amp power supply and must be connected to the mains with a cable which complies with the latest edition of the Local and National Wiring Regulations. Remember that an excess of cable length is required for the possible withdrawal of the range. A electrical socket type 14-30R must be provided within 5 feet of the left hand side of the range and accessible for disconnection.

DO NOT position socket above or behind the range. An easily accessible manual shut off gas valve must be fitted before the metal flexi gas line supply to the range. DO NOT fit valve behind the range. Any opening in the wall behind the appliance and in the floor under the appliance must be sealed.

Leveling

The AGA TC/DC Integrated Module (Gas Hob) is designed to stand on a flat surface, however any unevenness may be overcome by packing under the corners of the plinth with a suitable non-combustible material, (up to 1/8").

Must integrate with an AGA Total Control or Dual Control

Specifications are subject to change without notice. Visit agarrangeusa.com for the most up-to-date information.

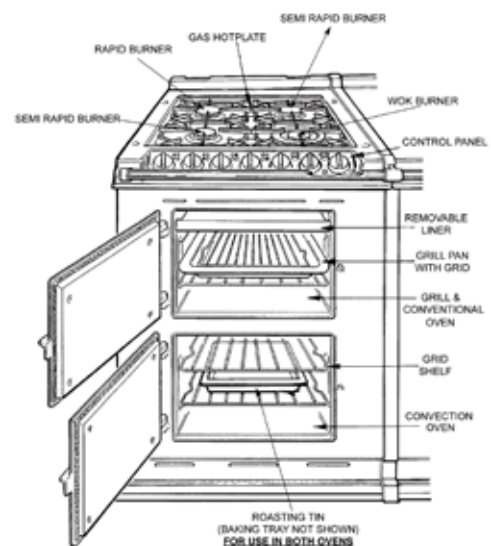


AGArangeusa.com

24" CLASSIC DUAL FUEL MODULE



Technical Specifications	
Overall Dimensions	36"H x 23½"W x 27½"D
1. Gas Range Top	(4) 10" x 10" Burners
2. Conventional Oven With Broiler	8½"H x 13¾"W x 19"D
3. Convection Oven With Fan	10"H x 13½"W x 17"D
Weight	284 lbs
Shipping Weight	393 lbs
Electrical Requirements	240v, 30amp, 60Hz
Fuel/Power	Natural Gas or Liquid Propane Burners, Electric Ovens
Warranty	1 Year Limited Warranty on all parts and labor
Shipping Instruction	Ships fully assembled



Must integrate with an AGA Total Control or Dual Control

Specifications are subject to change without notice. Visit agarangeusa.com for the most up-to-date information.